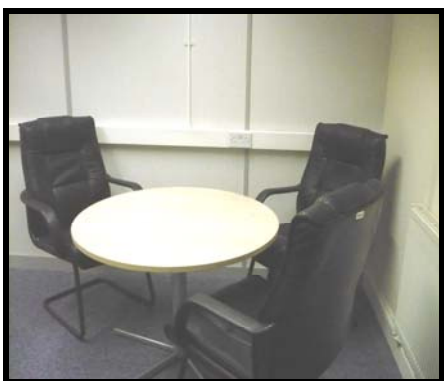
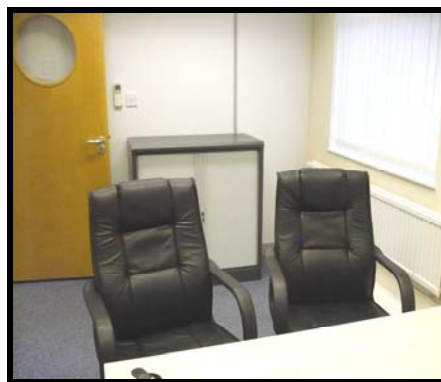
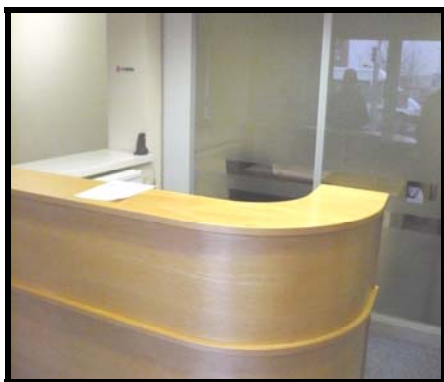


9 INDIVIDUAL SERVICED OFFICES TO LET



THEOBALD STREET, BOREHAMWOOD WD6 FROM 89 SQ FT – 210 SQ FT

Location:

Situated virtually opposite the entrance of the Borehamwood Retail Park on Theobald Street, Borehamwood. Borehamwood and Elstree Network Rail Station is a short walk away at the junction of Theobald Street and Shenley Road.

Description:

Comprising nine individual modern fully furnished office suites with shared kitchen and WC facilities being offered on an inclusive basis, including broadband internet access and cleaning. The offices have 24 hour access and there is one parking space allocated per office.

Licence:

Available on a licence basis for a minimum rental period of 6 months.



Areas:

Office No.	Size	Monthly Rental
One	126 sq ft	£575
Two	155 sq ft	£650
Three	210 sq ft	£950
Four	108 sq ft	£495
Five	89 sq ft	£450
Six	130 sq ft	£595
Seven	90 sq ft	£450
Eight	121 sq ft	£550
Nine	100 sq ft	£500

Reference Charge: Claridges charges a fee of £150.00 for taking up references for proposed tenants. This fee is non refundable after the references have been taken up, whether they are accepted or not by the Landlord.

Viewing:

By Appointment only
Via Claridges Commercial – 0845 205 0007