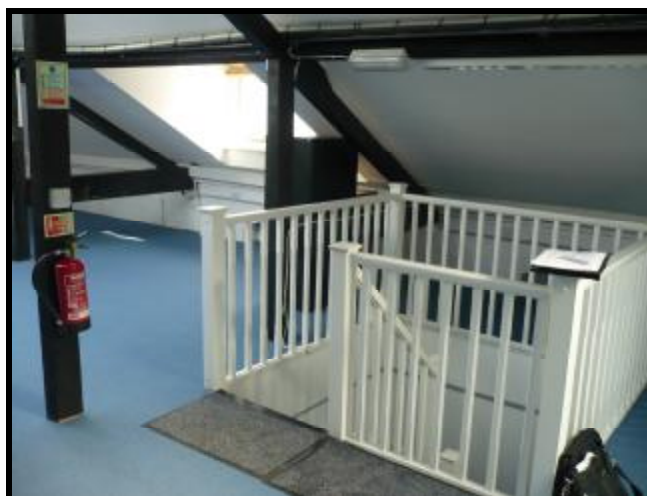


FUNKY SERVICED OFFICES TO LET SHORT TERM/LONG TERM



CREWYS ROAD, CHILDS HILL, LONDON NW2 487 SQ FT (45.31 SQ M)

- Location:** Situated midway along Crewys Road. Crewys Road runs between Cricklewood Lane and Nant Road at Childs Hill. Childs Hill is an area situated between Golders Green, Cricklewood and Hampstead.
- Description:** Comprising an unusual office area, which has been created within the roof space of a serviced office building and ideal for a creative business such as media, IT etc. The space is double glazed, bright (large roof light) and has perimeter trunking, internet access, air conditioning/heating.
- Parking:** A parking space is available at £100 per month.
- Areas:** **1st Floor Office**
10.37 m x 4.37 m (45.31 sq m) 487 sq ft
Plus storage
- Lease:** **First Floor Office**
Available on a Lease or Licence with a minimum term of 12 months at £1000 per month plus VAT.

Reference Charge: Claridges charges a fee of £180.00 for taking up references for proposed tenants. This fee is non refundable after the references have been taken up, whether they are accepted or not by the Landlord.

Viewing: **By Appointment only via Agents**
Claridges Commercial – 0845 205 0007