

D1 ACCOMMODATION TO LET



IMMEDIATELY OPPOSITE CALEDONIAN ROAD STATION, ISLINGTON, LONDON N7 3,500 SQ FT (325 SQ M)

IDEAL FOR:

- *EDUCATION**
- *TRAINING**
- *MEDICAL/DENTAL**

Location

Highbury Studios forms part of a new and exciting re-generation scheme in the heart of London's Islington cultural centre, that stretches from the new Emirates Stadium to Caledonian Road. The development is primarily located between Holloway Road and Caledonian Road on Hornsey Street and Eden Grove.

The property is exceptionally well served by public transport including Holloway Road and Caledonian Road Stations (Piccadilly Line), Finsbury Park (Piccadilly and main line services), Drayton Park and Highbury & Islington for main line suburban services. Many bus routes pass close by. Kings Cross and St Pancras International Stations are also within easy reach as is The City, West End and Holborn.

Known as the North Block this part of the development is situated at the corner of Cottage Road and Caledonian Road, immediately opposite Caledonian Road Underground Station (Piccadilly Line). The residential block above is Nicholas Court.

London Metropolitan University with over 34,000 students is close by, off Holloway Road.

The Property

The overall development designed by award winning architects Piers Gough. comprises over 1,000 apartments plus commercial/ retail and leisure space ranging in size from approximately 1,000 sq. ft to over 18,000 sq. ft.

Occupying approximately half the ground floor, in a high visibility location fronting Caledonian Road with an extensive return frontage to Cottage Road.

Arranged in virtually clear space with a maximum depth of approximately 65' (19.94 ms) and an average width of approximately 48' (14.73 ms) the total gross internal floor area is approximately 3,500 sq. ft (325 m²). There is a ceiling height of approximately 11' 3" (3.45 ms). Provision for WC's.

The property has excellent natural light.

Some parking may be available with this unit.

The property is offered in existing shell and core finish or can be fitted out and finished to an occupiers specific requirements.

Planning

I am advised that the property has D1 use and is suitable for education, training, medical and detail uses.

Car Parking

Additional individual garages/parking spaces are available to rent. Details upon request.

Rating

To be assessed

VAT

The property has been elected for VAT purposes.

Terms

The property is available to lease.

Lease terms to be by arrangement on full repairing and insuring terms.

Rents from £15 per square foot per annum exclusive.

Car parking space rentals on request.

Service charges for the current year are £2 per square foot.

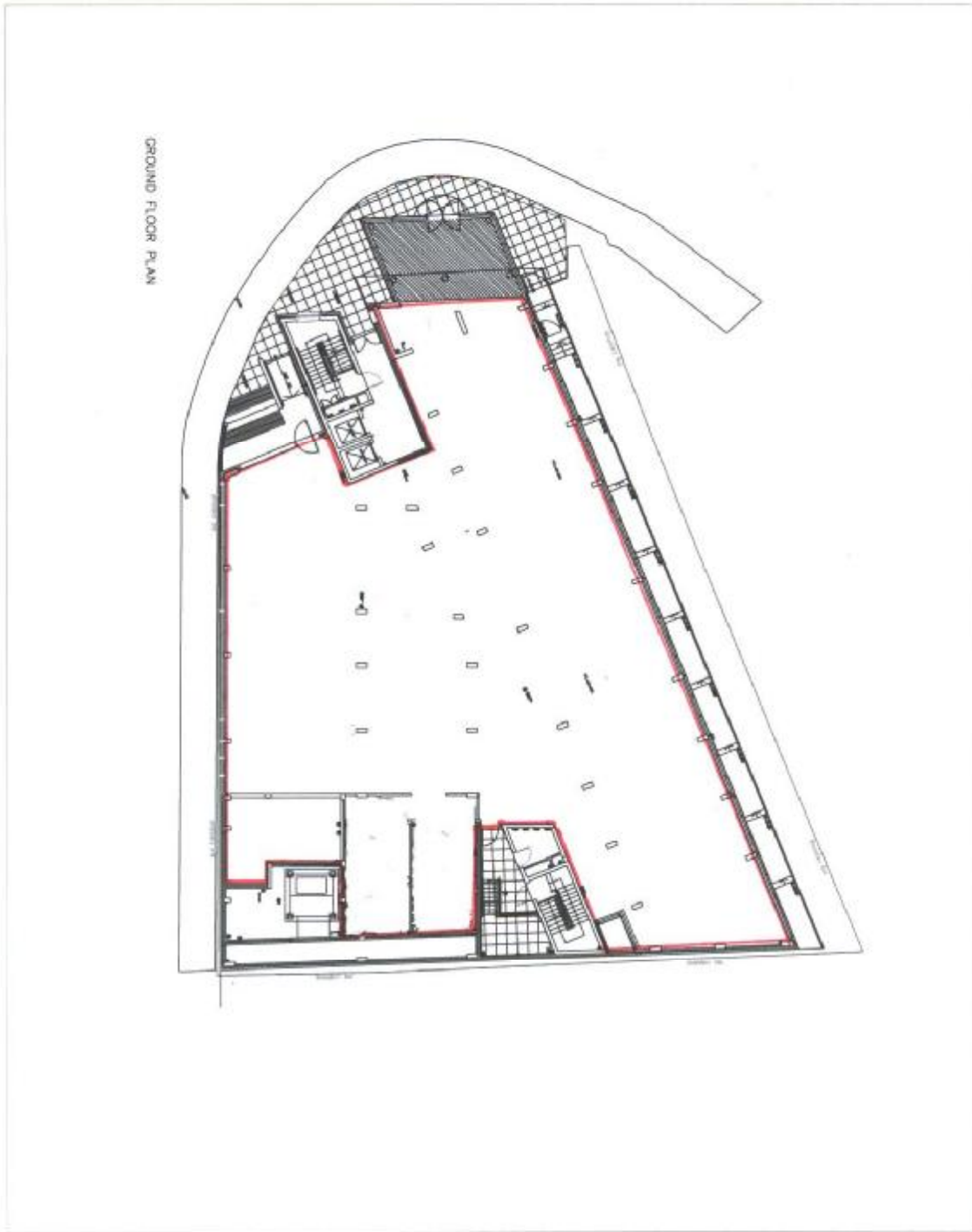
Subject to contract

EPC

Applied for

Viewing

**Strictly by appointment
Via Claridges Commercial – 0845 205 0007**



RMA <small>REGISTERED ARCHITECTS</small> <small>125, 126, 127, 128, 129, 130, 131, 132, 133, 134, 135, 136, 137, 138, 139, 140, 141, 142, 143, 144, 145, 146, 147, 148, 149, 150, 151, 152, 153, 154, 155, 156, 157, 158, 159, 160, 161, 162, 163, 164, 165, 166, 167, 168, 169, 170, 171, 172, 173, 174, 175, 176, 177, 178, 179, 180, 181, 182, 183, 184, 185, 186, 187, 188, 189, 190, 191, 192, 193, 194, 195, 196, 197, 198, 199, 200, 201, 202, 203, 204, 205, 206, 207, 208, 209, 210, 211, 212, 213, 214, 215, 216, 217, 218, 219, 220, 221, 222, 223, 224, 225, 226, 227, 228, 229, 230, 231, 232, 233, 234, 235, 236, 237, 238, 239, 240, 241, 242, 243, 244, 245, 246, 247, 248, 249, 250, 251, 252, 253, 254, 255, 256, 257, 258, 259, 260, 261, 262, 263, 264, 265, 266, 267, 268, 269, 270, 271, 272, 273, 274, 275, 276, 277, 278, 279, 280, 281, 282, 283, 284, 285, 286, 287, 288, 289, 290, 291, 292, 293, 294, 295, 296, 297, 298, 299, 300, 301, 302, 303, 304, 305, 306, 307, 308, 309, 310, 311, 312, 313, 314, 315, 316, 317, 318, 319, 320, 321, 322, 323, 324, 325, 326, 327, 328, 329, 330, 331, 332, 333, 334, 335, 336, 337, 338, 339, 340, 341, 342, 343, 344, 345, 346, 347, 348, 349, 350, 351, 352, 353, 354, 355, 356, 357, 358, 359, 360, 361, 362, 363, 364, 365, 366, 367, 368, 369, 370, 371, 372, 373, 374, 375, 376, 377, 378, 379, 380, 381, 382, 383, 384, 385, 386, 387, 388, 389, 390, 391, 392, 393, 394, 395, 396, 397, 398, 399, 400, 401, 402, 403, 404, 405, 406, 407, 408, 409, 410, 411, 412, 413, 414, 415, 416, 417, 418, 419, 420, 421, 422, 423, 424, 425, 426, 427, 428, 429, 430, 431, 432, 433, 434, 435, 436, 437, 438, 439, 440, 441, 442, 443, 444, 445, 446, 447, 448, 449, 450, 451, 452, 453, 454, 455, 456, 457, 458, 459, 460, 461, 462, 463, 464, 465, 466, 467, 468, 469, 470, 471, 472, 473, 474, 475, 476, 477, 478, 479, 480, 481, 482, 483, 484, 485, 486, 487, 488, 489, 490, 491, 492, 493, 494, 495, 496, 497, 498, 499, 500, 501, 502, 503, 504, 505, 506, 507, 508, 509, 510, 511, 512, 513, 514, 515, 516, 517, 518, 519, 520, 521, 522, 523, 524, 525, 526, 527, 528, 529, 530, 531, 532, 533, 534, 535, 536, 537, 538, 539, 540, 541, 542, 543, 544, 545, 546, 547, 548, 549, 550, 551, 552, 553, 554, 555, 556, 557, 558, 559, 560, 561, 562, 563, 564, 565, 566, 567, 568, 569, 570, 571, 572, 573, 574, 575, 576, 577, 578, 579, 580, 581, 582, 583, 584, 585, 586, 587, 588, 589, 590, 591, 592, 593, 594, 595, 596, 597, 598, 599, 600, 601, 602, 603, 604, 605, 606, 607, 608, 609, 610, 611, 612, 613, 614, 615, 616, 617, 618, 619, 620, 621, 622, 623, 624, 625, 626, 627, 628, 629, 630, 631, 632, 633, 634, 635, 636, 637, 638, 639, 640, 641, 642, 643, 644, 645, 646, 647, 648, 649, 650, 651, 652, 653, 654, 655, 656, 657, 658, 659, 660, 661, 662, 663, 664, 665, 666, 667, 668, 669, 670, 671, 672, 673, 674, 675, 676, 677, 678, 679, 680, 681, 682, 683, 684, 685, 686, 687, 688, 689, 690, 691, 692, 693, 694, 695, 696, 697, 698, 699, 700, 701, 702, 703, 704, 705, 706, 707, 708, 709, 710, 711, 712, 713, 714, 715, 716, 717, 718, 719, 720, 721, 722, 723, 724, 725, 726, 727, 728, 729, 730, 731, 732, 733, 734, 735, 736, 737, 738, 739, 740, 741, 742, 743, 744, 745, 746, 747, 748, 749, 750, 751, 752, 753, 754, 755, 756, 757, 758, 759, 760, 761, 762, 763, 764, 765, 766, 767, 768, 769, 770, 771, 772, 773, 774, 775, 776, 777, 778, 779, 780, 781, 782, 783, 784, 785, 786, 787, 788, 789, 790, 791, 792, 793, 794, 795, 796, 797, 798, 799, 800, 801, 802, 803, 804, 805, 806, 807, 808, 809, 810, 811, 812, 813, 814, 815, 816, 817, 818, 819, 820, 821, 822, 823, 824, 825, 826, 827, 828, 829, 830, 831, 832, 833, 834, 835, 836, 837, 838, 839, 840, 841, 842, 843, 844, 845, 846, 847, 848, 849, 850, 851, 852, 853, 854, 855, 856, 857, 858, 859, 860, 861, 862, 863, 864, 865, 866, 867, 868, 869, 870, 871, 872, 873, 874, 875, 876, 877, 878, 879, 880, 881, 882, 883, 884, 885, 886, 887, 888, 889, 890, 891, 892, 893, 894, 895, 896, 897, 898, 899, 900, 901, 902, 903, 904, 905, 906, 907, 908, 909, 910, 911, 912, 913, 914, 915, 916, 917, 918, 919, 920, 921, 922, 923, 924, 925, 926, 927, 928, 929, 930, 931, 932, 933, 934, 935, 936, 937, 938, 939, 940, 941, 942, 943, 944, 945, 946, 947, 948, 949, 950, 951, 952, 953, 954, 955, 956, 957, 958, 959, 960, 961, 962, 963, 964, 965, 966, 967, 968, 969, 970, 971, 972, 973, 974, 975, 976, 977, 978, 979, 980, 981, 982, 983, 984, 985, 986, 987, 988, 989, 990, 991, 992, 993, 994, 995, 996, 997, 998, 999, 1000</small>		10/11/13
A05 LOUGH ROAD - W15T		
PLAN		
07/08 - P1/02		

Ground floor plan. Not to scale. For identification purposes only.

SITUATION

Within walking distance of the established shops, bars and restaurants of Islington's Upper Street and the urban buzz of Holloway Road, Highbury Studios is at the heart of all things London. Nightlife on your doorstep includes four cinemas, the renowned Almeida Theatre and many late night bars and clubs.



- Medicine Bar
- Bierodrome
- The Elbow Room
- The Alma
- The Bailey
- Bar Coss



- Giraffe
- The Living Room
- The Social
- The Winchester
- Manjaro Kitchen
- Morgan M



- Sadler's Wells
- The Almeida
- The Kingshead Theatre
- Screen on the Green
- Roundhouse



- The Hilton
- Jurys London Inn
- Walter Sickert Hall



- Business Design Centre
- The Crafts Council
- Islington Arts Factory
- Cubitt Gallery
- Victoria Miro Gallery

